

THE CLAREMONT COLLEGES
MASS EVACUATION PLAN

OCTOBER 2024



THE
CLAREMONT
COLLEGES

THE CLAREMONT COLLEGES

MASS EVACUATION PLAN

PURPOSE:

In the event of a disaster that necessitates the evacuation of The Claremont Colleges, a coordinated and orderly plan is critical to ensure the safety and well-being of the entire community. This Mass Evacuation Plan covers the following campuses: Pomona Colleges, Claremont Graduate University, Scripps College, Claremont McKenna College, Harvey Mudd College, and Pitzer College.

INITIAL ACTIONS AND NOTIFICATIONS:

Initial actions will depend on the guidance provided to The Claremont Colleges Services (TCCS) by the Claremont Police Department (CPD) Incident Commander (IC) based on information received from the Los Angeles County Fire Department. Three standardized evacuation terms may be issued:

- **Evacuation Order:** An immediate threat to life is present. This is a lawful order to leave the area immediately, which is officially closed to public access.
- **Evacuation Warning:** A potential threat to life and/or property exists. Those needing extra time to evacuate, such as individuals with pets or mobility challenges, should leave immediately.
- **Shelter in Place:** All individuals should go indoors, shut and lock doors and windows, and prepare to remain self-sustained until further notice or until emergency personnel provide additional instructions.

METHODS OF COMMUNICATION:

TCCS will coordinate communication and support in accordance with these directives. At a minimum, the following communication methods will be employed.

- Everbridge - text/email alert notification system
- Website banners - posting "in case of emergency" banners on websites utilizing the TCCS Communications chain of command protocols for implementation.
- Social media - TCCS Communications will also post to the TCC Official social media platforms.

DETERMINATION TO EVACUATE:

Mandatory Evacuations

In some disaster situations, local authorities may give mandatory evacuation orders. In this situation, The Claremont Colleges will need to quickly react and follow the order by facilitating the evacuation of all

THE CLAREMONT COLLEGES

necessary individuals from the campuses. Mandatory evacuations may be ordered for one or more of the following incidents:

- Wildfires are impacting the area upwind from The Claremont Colleges.
- A hazardous material accident upwind from The Claremont Colleges.
- A credible threat of a weapon of mass destruction (WMD) threatening The Claremont Colleges.
- Any event that warrants the evacuation of all areas to protect the community.

Once the order has been received:

1. The Claremont Colleges Services Department of Campus Safety will promptly issue an Emergency Notification via Everbridge, delivering essential updates and critical information to ensure the community is informed and prepared.
2. Campus Safety Dispatch will also notify each of The College's On-Call Deans.
3. The On-Call Deans will notify their institution's Incident Commander or Person-In-Charge.
4. The Incident Commanders or Person-In-Charge will activate their emergency support teams.
5. The Incident Commanders will coordinate the execution of the Mass Evacuation Plan by determining the notification process, methods, destinations, and whether the evacuation is expected to be short—or long-term.
6. Campus Safety will activate the Emergency Operations Center (EOC) to provide essential support and coordinate critical response efforts.

INTERNAL DETERMINATION TO EVACUATE:

In some situations, The Claremont Colleges may need to independently decide to evacuate due to internal risk assessments. In such cases, one or more institutions may have already activated their Emergency Response Organization due to an emergency or imminent threat.

When any college has activated its Emergency Response Organization or Emergency Operations Center, The Claremont Colleges Services (TCCS) EOC will also be activated to provide support, coordinate, and facilitate information sharing. If evacuation is being considered, the following process should be followed:

1. The TCCS Incident Commander (IC) will communicate with the Incident Commanders or Persons in Charge at the other institutions to determine whether the Mass Evacuation Plan should be activated.
2. If evacuation is deemed necessary, the IC or the Persons in Charge will coordinate the execution of the Mass Evacuation Plan, which includes determining the notification process, evacuation methods, destinations, and whether the evacuation is short—or long-term.

THE CLAREMONT COLLEGES

NOTIFICATION TO EVACUATE:

As required by the Clery Act, Emergency Notifications will be issued promptly to ensure the community's safety. The notifications will be sent through the Everbridge system, providing critical information and instructions. Depending on the specific situation, the IC will choose one of the following methods to notify the community:

1. If the evacuation affects all of The Claremont Colleges, The Claremont Colleges Services Emergency Operations Center (TCCS EOC) will send a mass notification via Everbridge to the entire community.
2. If the evacuation is specific to a particular campus or area, **each institution will send an Everbridge notification to their** community with tailored instructions.

These notifications will provide essential guidance to facilitate a safe and orderly evacuation. Each evacuation notification should provide the following information:

1. **Reason** for the evacuation.
2. **Urgency** or timeline for evacuation.
3. **Routes and areas to avoid** during evacuation.
4. **Methods of evacuation** (e.g., personal vehicles, transit, foot).
5. **Evacuation destinations** or meet-up locations, including guidance for those without local refuge.
6. Information on whether the evacuation is **short- or long-term**.

METHODS OF EVACUATION:

Personal Vehicles

Many members of the community may be able to evacuate using personal vehicles. The following protocols should be observed:

- Individuals with personal vehicles should be encouraged to offer rides to as many individuals in need as they can safely accommodate.
- If time and safety permits, individuals using personal vehicles should check in at a designated location, where staff can document who is being transported and their intended destination.
- If there is insufficient time or it is unsafe to conduct such check-ins, accounting for those who evacuate via personal vehicle should occur at the destination point.
- Each institution should educate its community about how to report their location and status after evacuation, using methods such as phone or web-based reporting.

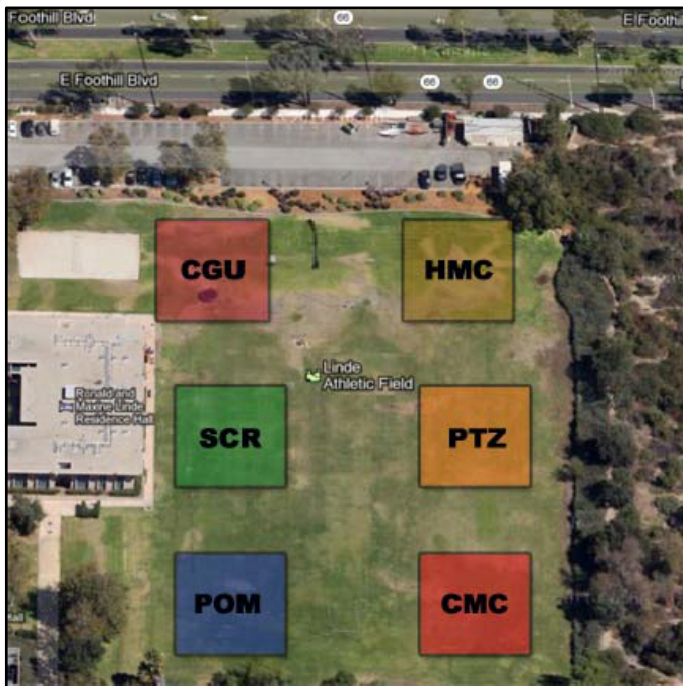
Transit by Foot

If evacuation on foot becomes necessary and is deemed safe, the following protocol may be utilized:

THE CLAREMONT COLLEGES

- All individuals evacuating on foot should assemble at **Linde Athletic Field at Harvey Mudd College** (located at the far northeast corner of The Claremont Colleges).
- Each institution should deploy staff to organize members of their community into groups at the following rally points at Linde Athletic Field:
- Once assembled, evacuation teams will guide the community to safe destinations outside the immediate danger zone.
- Once groups are assembled at the rally points and have checked in, they may be guided by a campus representative to Cable Airport, located at 1749 W 13th St, Upland, CA 91786. Cable Airport is less than a mile northeast of The Claremont Colleges.

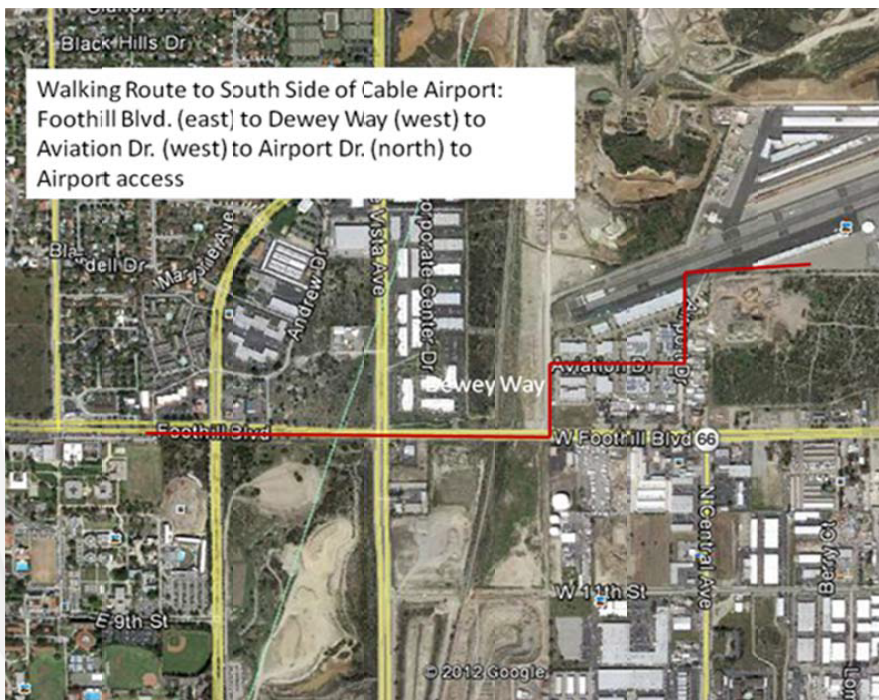
LINDE ATHLETIC FIELD



THE CLAREMONT COLLEGES

Cable Airport has two designated areas that may be used as temporary gathering sites for the evacuated population. These locations are on the **South side** and **North side** of the airport, as indicated in the maps below. These sites will serve as initial points for care and coordination.

CABLE AIRPORT / NORTH SIDE



THE CLAREMONT COLLEGES

Bus and Large Vehicle Evacuation

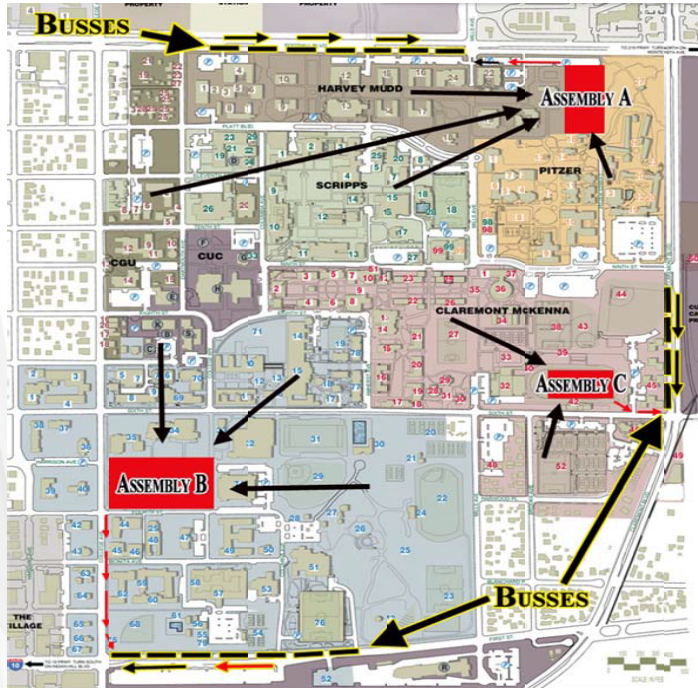
Evacuating the entire population of The Claremont Colleges will require using buses or other large vehicles. These vehicles may be used to transport individuals either from the main campus or from **Cable Airport**. The companies listed below are available to provide buses and may be directed to one of the following staging locations based on accessibility and safety:

- **South side of Foothill Boulevard:** Facing east, beginning at Claremont Boulevard.
- **North side of First Street:** Facing west, beginning at College Avenue.

Below the map is a list of possible bus companies that may be contacted to assist.

| POSSIBLE BUS AND CHARTER COMPANIES | | | | |
|------------------------------------|----------------------|--------------|-------------------|----------|
| | Name | Day Phone | After Hours Phone | Distance |
| 1. | Foothill Transit | 800-743-3463 | | 15 miles |
| 2. | Greyhound Bus Lines | 800-454-2487 | | Unknown |
| 3. | USA Bus Charter | 310.594.5400 | | Unknown |
| 4. | Royal American Tours | 818-547-3737 | | 34 miles |

Bus Pickup and Route Locations:



THE CLAREMONT COLLEGES

Aircraft Evacuation

In extreme emergencies where it is necessary to evacuate students out of the region, airports capable of handling the volume of evacuees should be identified. Once a safe airport is chosen, the methods described above (buses and large vehicles) will transport the population to the airport. The evacuation plan should also consider the following:

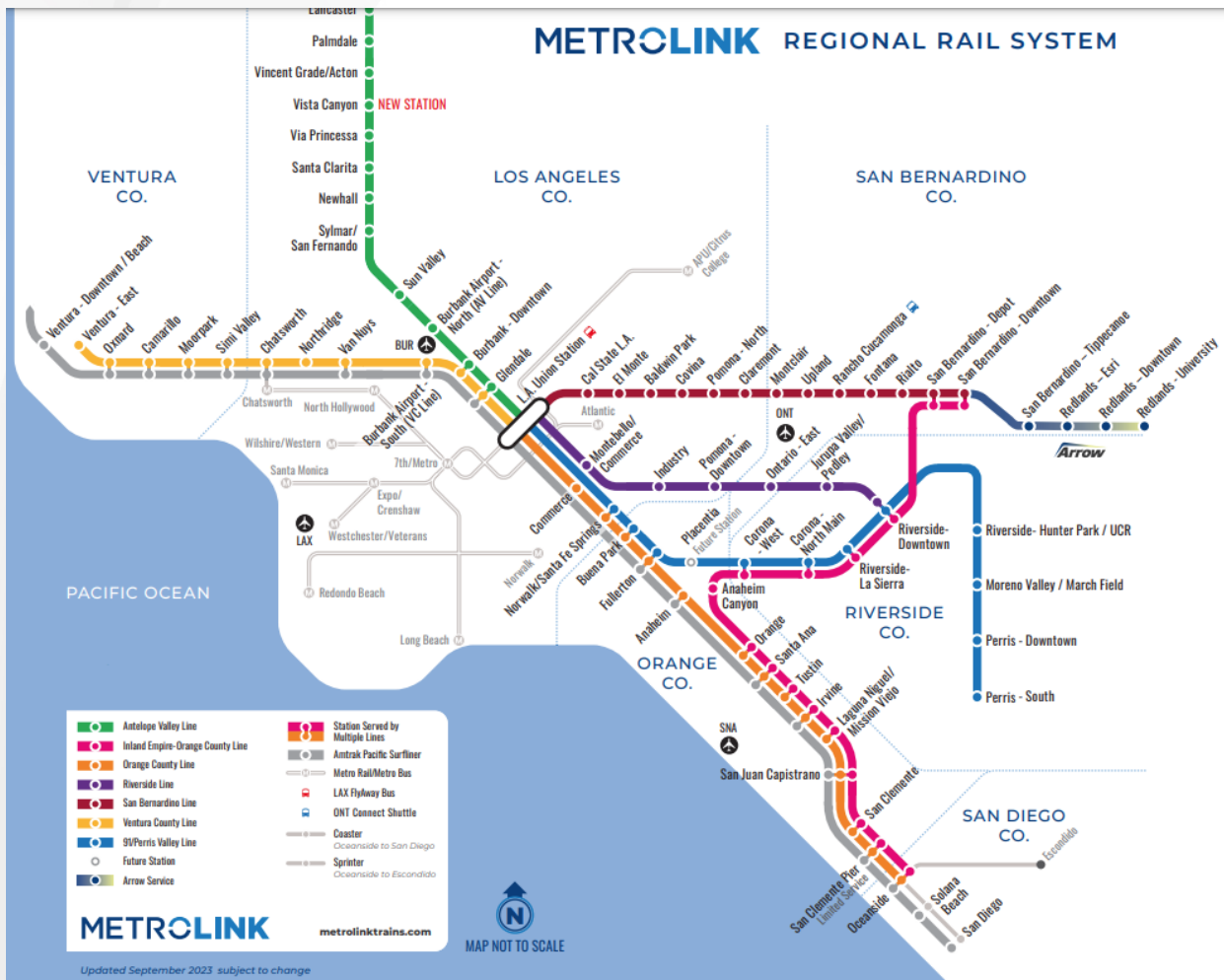
- **Short-term relocation:** Students may be temporarily moved to an unaffected region until the emergency is resolved.
- **Individual destinations:** Students with the means to travel may be sent to destinations where family or friends can provide care.
- **Sheltering students without local support:** Those without a safe destination will be transported to unaffected regions and placed in hotels or similar accommodations.

| POSSIBLE AIRPORT OPTIONS | | | |
|---------------------------------|--|--|-----------------|
| | Name | Address | Distance |
| 1. | Ontario International Airport | 1923 East Avion Drive, Ontario, California | 10 miles |
| 2. | San Bernardino International Airport | 294 South Leland Norton Way, San Bernardino | 31 miles |
| 3. | John Wayne Airport | 18601 Airport Way, Santa Ana, California | 38 miles |
| 4. | Long Beach Airport | 4100 E Donald Douglas Dr, Long Beach, CA | 40 miles |
| 5. | Bob Hope Airport | 2627 North Hollywood Way, Burbank, CA 91505 | 41 miles |
| 6. | Los Angeles International Airport | 1 World Way, Los Angeles, CA 90045 | 50 miles |
| 7. | Palm Springs International | 3400 East Tahquitz Canyon Way, Palm Springs | 79 miles |
| 8. | San Diego International Airport | 3225 North Harbor Drive, San Diego, California | 119 miles |
| 9. | Phoenix Sky Harbor International Airport | 3400 East Sky Harbor Blvd., Phoenix, Arizona | 349 miles |

Metrolink Evacuation Option

In addition to buses and aircraft, The Claremont Colleges may utilize the **Metrolink** system to facilitate the evacuation of the campus population. The **Claremont Metrolink Station**, located at **200 W. First Street**, provides a valuable transportation option for moving evacuees away from the area during an emergency. Coordination with local authorities and Metrolink officials will be necessary to ensure timely and safe transport. Specific schedules, routes, and capacity will be determined based on the nature of the emergency, and evacuation instructions will be communicated through the Everbridge notification system.

THE CLAREMONT COLLEGES



REGIONAL COORDINATION:

During an emergency of any level, TCCS will contact and coordinate with CPD, the Los Angeles County Sheriff's and Fire Departments, County Public Works, Caltrans, utilities, or any other partner agency responding to or relevant to the incident.

During a regional emergency declared by the county, state, or federal government, TCCS will coordinate with the City and County Office of Emergency Management to ensure unified messaging about the incident. To ensure unified messaging, TCCS will only post incident emergency information that has been approved by the agency that has jurisdiction over the incident. TCCS may still post emergency and incident information that is directly under The Claremont Colleges' purview.

THE CLAREMONT COLLEGES

EVACUATION AND ROAD CLOSURE TERMINOLOGY:

Evacuation Order: Immediate threat to life. This is a lawful order to leave now. The area is lawfully closed to public access.

Evacuation Warning: Potential threat to life and/or property. Those who require additional time to evacuate, and those with pets and livestock should leave now.

Shelter in Place: Go indoors. Shut and lock doors and windows. Prepare to self-sustain until further notice and/or contacted by emergency personnel for additional direction.

Evacuation Order(s) Lifted: The formal announcement of lifting evacuations in an area currently under evacuation.

Hard Closure: Closed to all traffic except fire and law enforcement.

Soft Closure: Closed to all traffic except Fire, law enforcement and critical incident resources (i.e. Caltrans, city/county roads etc. or those needed to repair or restore infrastructure).

Resident Only Closure: Soft closure with the additional allowance of residents and local government agencies assisting with response and recovery.

UPDATED: October 11, 2024