

# Welcome to Kaiser Permanente

## 3 easy steps to get started



### Step 1:

#### Create your online account

If you or your family members haven't already, be sure to create an online account through the Kaiser Permanente app or at [kp.org/newmember](https://kp.org/newmember). After you sign in, you'll be guided through the welcome steps. With an online account you can view your benefits, schedule routine appointments, fill most prescriptions, set up permissions to manage a family member's care, and more.<sup>1,2</sup>



### Step 2:

#### Choose your Kaiser Permanente doctor – and change to another available Kaiser Permanente doctor anytime

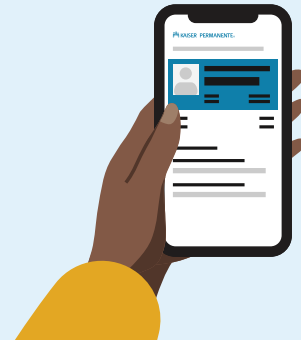
To find a doctor who's right for you, go to [kp.org/newmember](https://kp.org/newmember). Select a convenient facility, then browse doctor profiles by gender, languages spoken, and specialty. Each covered family member may choose an individual doctor. You can also call us for help at **1-888-956-1616 (TTY 711)**.



### Step 3:

#### Get prescriptions

Finally, we'll help you transition your current prescriptions to Kaiser Permanente. Just go to [kp.org/newmember](https://kp.org/newmember) and follow the steps. Or give us a call at **1-888-956-1616 (TTY 711)**. Be sure to have your prescription information handy.



#### Keep your ID card handy

Access your digital ID card on the Kaiser Permanente app or use the enclosed physical ID card. Both versions have your unique medical record number and important contact information. You'll need your medical record number to get care, make appointments, and fill prescriptions.

#### It's easy to get care

You have access to a full range of care options. If you're not sure what kind of care you need, simply call the appointment and advice phone number on the back of your ID card.

1. These features are available when you get care from Kaiser Permanente facilities. 2. Online features change when children turn 12. Teens are entitled to additional privacy protection under state laws. When your child turns 12, you'll still be able to manage care for them with modified access to certain features.

**Get started today! Go to [kp.org/newmember](https://kp.org/newmember) or call us at **1-888-956-1616**, Monday through Friday, 7 a.m. to 7 p.m. (TTY 711).**