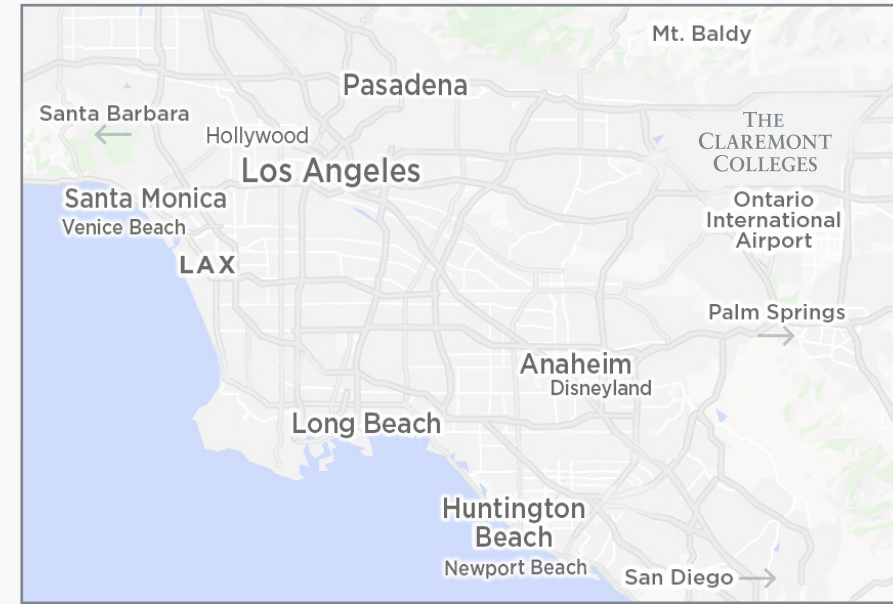


THE CLAREMONT COLLEGES ARE LOCATED IN THE BEAUTIFUL CITY OF CLAREMONT, CALIFORNIA.

Claremont, a suburban city 30 miles east of downtown Los Angeles, is nestled at the base of the foothills of the San Gabriel Mountains. With a population of just 35,000, the quintessential college town of Claremont is known as the City of Trees and PhDs. At its center is the Village, a strollable downtown destination where café tables dot the sidewalks, and shops invite browsing on tree-lined streets. Street festivals, concerts in the park, movie nights and a weekly farmers market contribute to the city's unique and welcoming environment. With the 2,000 acre Claremont Hills Wilderness Park and miles of dedicated trails and bike lanes as well as a Metrolink station in the Village that links riders to many popular Southern California destinations, Claremont is the place to be.



# A HIGHLY DISTINCTIVE MODEL OF COLLABORATION IN HIGHER EDUCATION



[WWW.CLAREMONT.EDU](http://WWW.CLAREMONT.EDU)  
 (909) 621-8000 | [Communications@Claremont.edu](mailto:Communications@Claremont.edu)

THE CLAREMONT COLLEGES



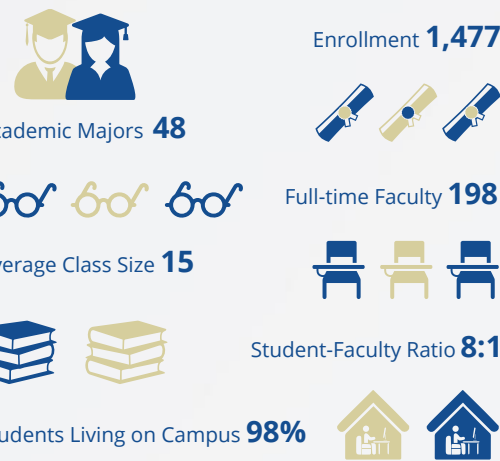
# THE CLAREMONT COLLEGES

Students at **The Claremont Colleges** benefit from the diverse missions, character and culture of the five undergraduate and two graduate institutions as well as the seamless integration of the academic and extracurricular programs that make up this truly unique consortium. This one-of-a-kind higher education community includes almost 10,000 students gathered from every corner of the United States and the world, and over 4,000 expert faculty and staff who support them in their wide-ranging pursuits.



FOUNDED 1887

Established in 1887, Pomona College is widely regarded as one of the world's leading liberal arts colleges. Pomona is an ideal environment for adventurous, intellectually curious students with the drive to explore and pursue their academic and life goals across 48 offered majors and through sponsored research and internships. Committed to enrolling the best students, regardless of financial circumstances, Pomona is one of a small group of colleges to meet 100% of demonstrated need without loans. Our close-knit student body of 1,477 is highly diverse in background and academic pursuits, yet unified by a spirit of collaboration and a commitment to making a positive difference both locally and globally.

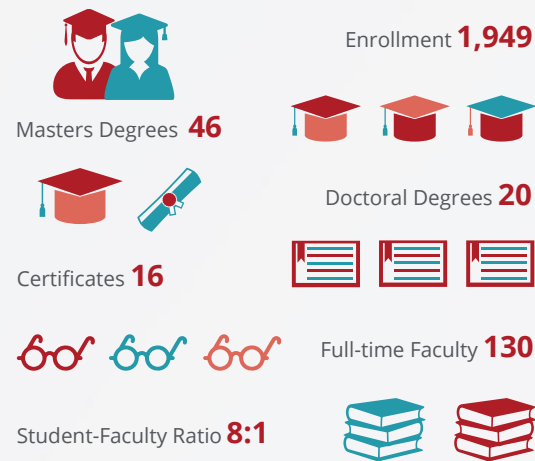


[WWW.POMONA.EDU](http://WWW.POMONA.EDU)  
Admissions Office: (909) 621-8134  
[www.pomona.edu/admissions-aid](http://www.pomona.edu/admissions-aid)



FOUNDED 1925

Since 1925, the Claremont Graduate University (CGU) has offered an intimate, high-touch academic research environment. CGU has a unique brand of graduate-only scholarship that transcends traditional disciplinary boundaries to foster the creation of new knowledge—and new ways of seeing and improving the world. Globally recognized faculty-scholars lead specialized programs, which may be tailored to specific interests and career aspirations. CGU students receive practice-based training and individual mentorship that prepares them for successful employment and enables them to effect positive social change.

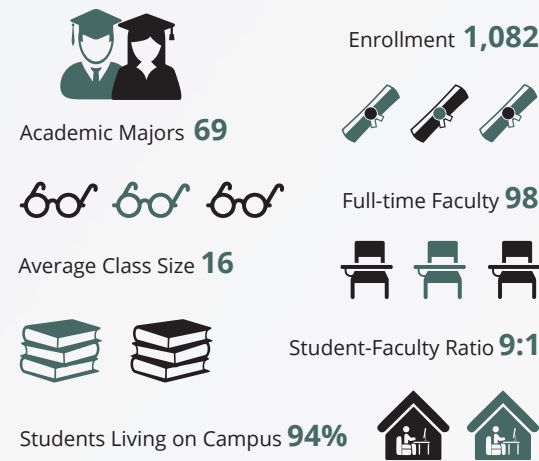


[WWW.CGU.EDU](http://WWW.CGU.EDU)  
Admissions Office: (909) 607-7811  
[www.cgu.edu/admissions](http://www.cgu.edu/admissions)



FOUNDED 1926

Scripps College is a top-ranked, private, residential women's liberal arts college, founded in 1926 by newspaper publisher and philanthropist Ellen Browning Scripps. Scripps offers a rigorous interdisciplinary curriculum, a robust intellectual community, a commitment to diversity and inclusion, and a rich residential experience designed to shape the next generation of women leaders. Through active student participation in a demanding community of scholars, the College prepares graduates to contribute to society through leadership, service, integrity, and creativity. Top majors include biology, social science, psychology, communications, natural resources and conservation, and English.

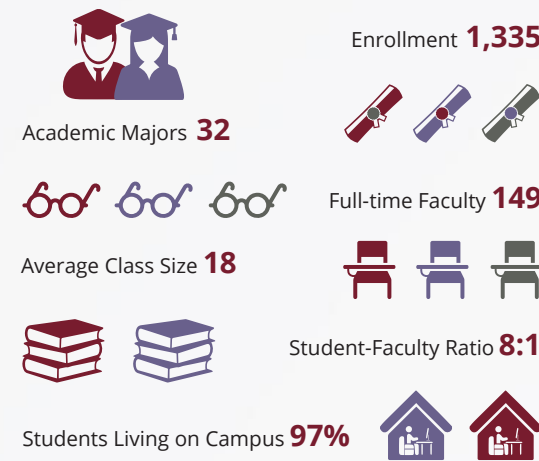


[WWW.SCRIPPSCOLLEGE.EDU](http://WWW.SCRIPPSCOLLEGE.EDU)  
Admission Office: (909) 621-8149  
[www.scrippscollege.edu/admission](http://www.scrippscollege.edu/admission)



FOUNDED 1946

Through its diverse intellectual and social community, Claremont McKenna College (CMC) prepares students to put collaborative, responsive, and responsible leadership to work for everyone. Learning to lead at CMC requires open-minded inquiry and the confidence to speak up, the curiosity to explore broadly divergent viewpoints, and the intellectual and social skills to reconcile them. At CMC, the liberal arts learner also excels in situations that require ingenuity and adaptability thanks to a wide-ranging, interwoven curriculum taught by world-class faculty. Exceptionally high numbers of undergraduate students conduct research with professors and get to know them as collaborative partners. The school is further distinguished by its eleven graduate-level institutes, renowned Athenaeum speaker series, and highly-ranked Division III athletics program.

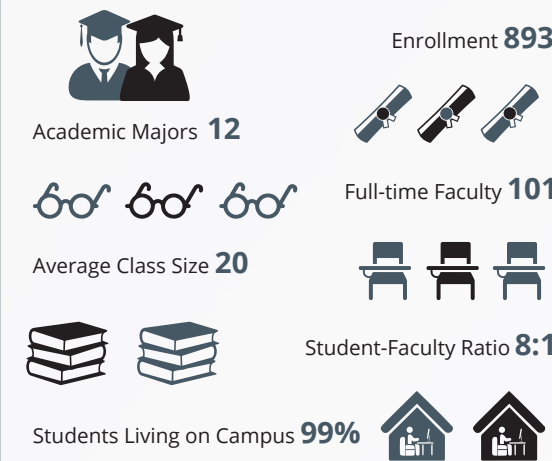


[WWW.CMC.EDU](http://WWW.CMC.EDU)  
Admission Office: (909) 621-8088  
[www.cmc.edu/admission](http://www.cmc.edu/admission)



FOUNDED 1955

Harvey Mudd College (HMC) is one of the premier engineering, science and mathematics colleges in the United States. HMC educates engineers, scientists and mathematicians who become leaders in their fields and have a clear understanding of the impact their work has on society. For more than 50 years, HMC has led the way with interactive undergraduate research opportunities on par with graduate institutions. HMC has a strong focus on the humanities and social sciences, an exceptional faculty who challenge students to achieve beyond their expectations and one of the nation's highest rates of graduates who go on to earn PhDs. HMC's graduates are highly trained scientists, technologists, educators, entrepreneurs and other professionals who are committed to excellence, integrity, equity and inclusion.

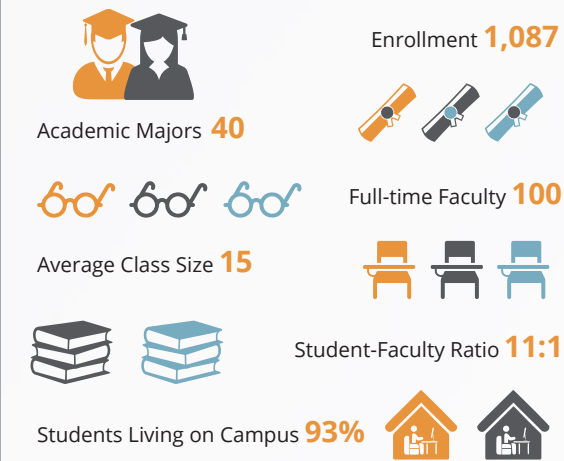


[WWW.HMC.EDU](http://WWW.HMC.EDU)  
Admission Office: (909) 621-8011  
[www.hmc.edu/admission](http://www.hmc.edu/admission)



FOUNDED 1963

Founded in 1963, Pitzer College is a top-ranked liberal arts and sciences college. Pitzer's approach to education is distinguished by five core values: Interdisciplinary Learning, Social Responsibility, Environmental Sustainability, Intercultural Understanding, and Student Engagement. Focused educational objectives and values-driven coursework guide undergraduates as they plan their academic careers as agents of change. Students can work with faculty advisers to create their own special majors, shaping their college experience. They are encouraged to collaborate with community members on local projects and critically examine the effects of social and environmental policies. Since its inception, Pitzer has pioneered fields such as environmental studies and secular studies.

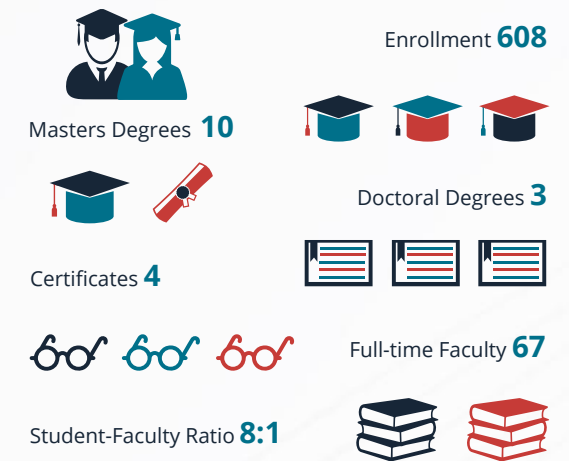


[WWW.PITZER.EDU](http://WWW.PITZER.EDU)  
Admission Office: (909) 621-8129  
[www.pitzer.edu/admission](http://www.pitzer.edu/admission)



FOUNDED 1997

Keck Graduate Institute (KGI) offers innovative postgraduate degrees and certificates that integrate life and health science, business, engineering, pharmacy, and genetics. With a focus on team projects and hands-on industry experience, KGI provides pathways for students to become leaders within healthcare and the applied life sciences. KGI consists of four schools: Henry E. Riggs School of Applied Life Sciences, School of Medicine, School of Pharmacy and Health Sciences, and the Minerva Schools at KGI.



[WWW.KGI.EDU](http://WWW.KGI.EDU)  
Admissions Office: (909) 607-7855  
[www.kgi.edu/admissions](http://www.kgi.edu/admissions)